

**WIN/DOR<sup>®</sup>**

*For the Name and Products You Can Trust!*



# Product Gallery



*3750 Black Exterior Folding Window & Swing Door*



*3750 Black Exterior Folding Window*



*3750 White Corner Folding Door*

# Product Gallery



*2750 Beige Multi Slide with Black Signature Handle Option*



*3750 Bronze Exterior Multi Slide*



# 3750 Multi Slide System

## Features and Benefits

### □ Sizing

- Standard sizing in 9', 12', and 15' x 8' in 3 panel Configuration.
- Standard sizing in 12', 16', and 20' x 8' in 4 panel Configuration.
- Maximum panel size is 5' x 8' or 40 sq ft.
- Maximum frame width of 3 panel door system at 15'.
- Maximum width of 4 panel door system at 20'.
- Custom sizing available.

### □ Frame

- KD or welded main frame.
- 7 $\frac{3}{4}$ " total width 6 $\frac{3}{4}$ " jamb depth all PVC multi-chambered profile frame system (on 3 panel).
- 10 $\frac{3}{16}$ " total width 9 $\frac{3}{16}$ " jamb depth all PVC multi-chambered profile frame system (on 4 panel).
- Integrated nail fin application with 1" or 1 $\frac{1}{8}$ " set back.
- Full length weather stripping on all 4 frame components.
- Integrated sill drainage with snap-in sill covers.

### □ Sash

- Fully welded vinyl sash with internal aluminum reinforcement with  $\frac{7}{8}$ " standard IG, or a 1 $\frac{1}{4}$ " triple insulated glass system.
- Many high energy-efficient glass options for the most extreme temperature sensitive regions.
- Standard glazing, Cardinal™ LoE 366® dual glazed tempered glass.
- All stiles are metal reinforced for extreme wind load resistance.
- Unique internal drainage system to minimize risk of seal failures.
- Interior glazed for better performance.

### □ Hardware

- Truth Nexus 2 point lock with opposing lock points.
- Anti-lock feature preventing a "false" sense of lock up.
- Flush mount handle - does not protrude into the room.
- Deep finger pocket - provides superior grip area for moving large door panels.
- Recessed thumb slide intuitive locking and unlocking of panel.
- Stainless steel roller housing and composite wheels with side adjustment, AAMA rated to carry a 500 pound panel for 10,000 cycles without change to adjustment.
- Hardware colors; white, black powder coat, and brushed chrome.

### □ Extruded Vinyl Colors



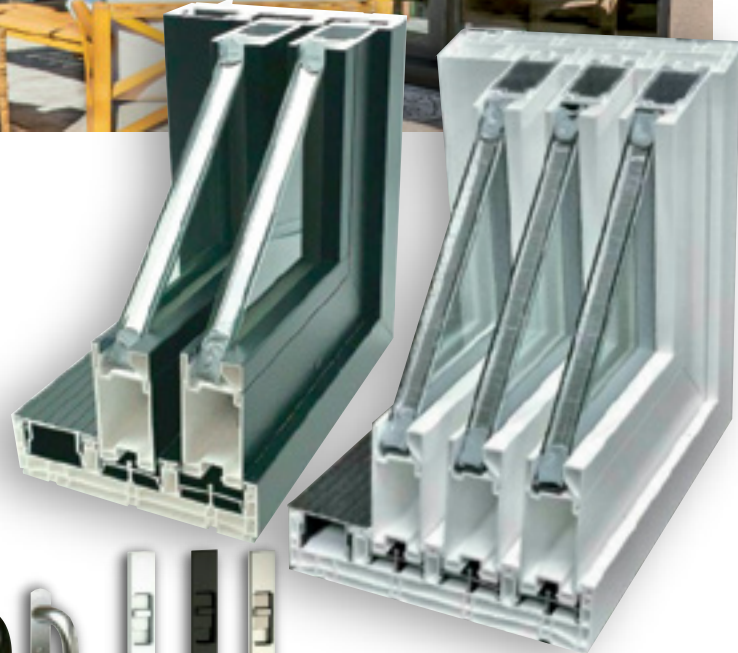
### □ Optional Exterior Stocked Colors



### Optional

- Black Interior and Exterior Specialty Laminate

Featuring **WINSHIELD** Jet Black



Signature (Option)

Flush Mount (Standard)



# 3750 Sliding Door System

## Features and Benefits

### Frame

- 5 1/16" KD or welded main frame with integral pre-punched nailing flange with either a 1" or 1 1/8" set back.
- Sloped aluminum anodized threshold cover.
- Integrated screen channel in the frame with aluminum screen track for ease of operation and long term durability.
- Anodized aluminum track.

### Sash

- Fully welded 3 3/4" x 1 3/4" vinyl sash with internal aluminum reinforcement.
- Standard 7/8" IG, or a 1 1/4" triple insulated glass system.
- Many high energy-efficient glass options for the most extreme temperature sensitive regions.
- Standard glazing, Cardinal™ LoE 366® dual glazed tempered glass with warm-edge spacer system.
- All stiles are metal reinforced for extreme wind load resistance.
- Unique internal drainage system to minimize risk of seal failures.
- Interior glazed for better performance.
- Stainless steel roller housing and composite wheels with side adjustment, AAMA rated to carry a 500 lb panel for 10,000 cycles without change to adjustment.
- Truth's Anti-Slam and double point lock. Meets the most stringent forced entry resistance testing.

### Hardware

Hardware colors; white, beige, black powder coat, and brushed chrome.

### Extruded Vinyl Colors



### Optional Exterior Stocked Colors



### Optional

- Black Interior and Exterior Specialty Laminate

Featuring **WINSHIELD**



Signature (Standard)

Flush Mount (Option)





# 2750 Multi Slide System

## Features and Benefits

### □ Sizing

- Standard sizing in 9' x 8' and 12' x 8' in 3 panel configuration.
- Standard sizing in 12' x 8' and 16' x 8' in 4 panel configuration.
- Maximum panel size is 4' x 8'.
- Maximum frame width of 3 panel door system at 12'.
- Maximum width of 4 panel door system at 16'.
- Custom sizing available.

### □ Frame

- KD or welded main frame.
- 7 $\frac{3}{4}$ " total width 6 $\frac{3}{4}$ " jamb depth all PVC multi-chambered profile frame system (on 3 panel).
- 10 $\frac{3}{16}$ " total width 9 $\frac{3}{16}$ " jamb depth all PVC multi-chambered profile frame system (on 4 panel).
- Integrated nail fin application with 1" or 1 $\frac{3}{8}$ " set back.
- Full length weather stripping on all 4 frame components.
- Integrated sill drainage with snap-in sill covers.

### □ Sash

- Fully welded vinyl sash with internal aluminum reinforcement with  $\frac{7}{8}$ " standard IG, or a 1 $\frac{1}{4}$ " triple insulated glass system.
- Many high energy-efficient glass options for the most extreme temperature sensitive regions.
- Standard glazing, Cardinal™ LoE 366® dual glazed tempered glass.
- All stiles are metal reinforced for extreme wind load resistance.
- Unique internal drainage system to minimize risk of seal failures interior glazed for better performance.

### □ Hardware

- Truth Nexus 2 point lock with opposing lock points.
- Anti-lock feature preventing a "false" sense of lock up.
- Stainless steel roller housing and composite wheel with end adjustment, AAMA rated to carry a 500 pound panel for 10,000 cycles without change to adjustment.
- Hardware colors; white, beige, black powder coat, and brushed chrome.

### □ Extruded Vinyl Colors



### □ Optional Exterior Stocked Colors



### □ Optional

- Black Exterior Specialty Laminate

Featuring **WINSHIELD**

Jet Black





# 2750 Sliding Door System

## Features and Benefits

### Frame

- 5<sup>15</sup>/<sub>16</sub>" KD or welded main frame with integral pre-punched nailing flange with either a 1" or 1<sup>3</sup>/<sub>8</sub>" set back.
- Sloped aluminum anodized threshold cover.
- Integrated screen channel in the frame with aluminum screen track for ease of operation and long term durability.
- Anodized aluminum track.

### Sash

- Fully welded 2<sup>3</sup>/<sub>4</sub>"x 1<sup>3</sup>/<sub>4</sub>" vinyl sash with internal aluminum reinforcement.
- Standard <sup>7</sup>/<sub>8</sub>" IG, or a 1<sup>1</sup>/<sub>4</sub>" triple insulated glass system.
- Many high energy-efficient glass options for the most extreme temperature sensitive regions.
- Standard glazing, Cardinal™ LoE 366® dual glazed tempered glass with warm-edge spacer system.
- All stiles are metal reinforced for extreme wind load resistance.
- Unique internal drainage system to minimize risk of seal failures.
- Interior glazed for better performance.
- Stainless steel roller housing and composite wheels with side adjustment, AAMA rated to carry a 500 lb panel for 10,000 cycles without change to adjustment.
- Truth's Anti-Slam and double point lock. Meets the most stringent forced entry resistance testing.

### Extruded Vinyl Colors



### Optional Exterior Stocked Colors



### Optional

- Black Exterior Specialty Laminate

Featuring **WINSHIELD** *Jet Black*

### Hardware

Hardware colors: white, beige, black powder coat, and brushed chrome



Standard

Signature (Optional upgrade)





# 3750 Swing Door System

## Features and Benefits

- Welded vinyl main frame with internal aluminum reinforcement with the option of a 1" or a 1 1/8" nailing flange.
- Foam backed weather seal on main frame.
- Contemporary style vinyl sash with internal aluminum reinforcement.
- Welded sash corners.
- Adjustable contemporary European hinges.
- Stainless multipoint locking hardware on both active and inactive sash.
- Bronze and commercial clear anodized aluminum sill covers inside and outside.

### ▣ Sizes

- New Construction / Replacement.
- Custom applications.

### ▣ Glass Options

- Cardinal™ LoE 366® Dual Glazed tempered glass.
- Edgetech® warm-edge spacer system.
- Clear, obscure, and custom glass is available.

### ▣ Grids

- SDL (Simulated Divided Lite).
- GBG (Grids Between Glass).

### ▣ Hardware

- Hardware Colors; White, Black powder coat, and Brushed Chrome.

### ▣ Extruded Vinyl Colors



### ▣ Optional Exterior Stocked Colors



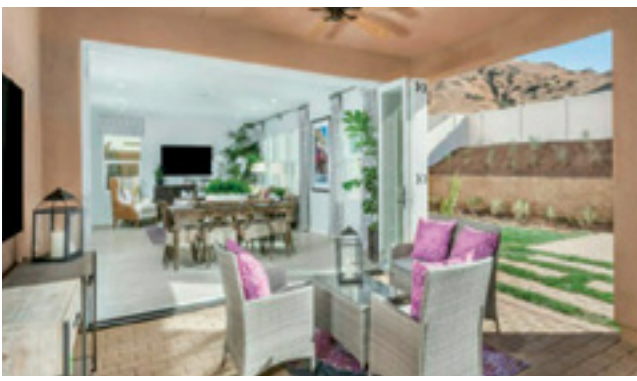
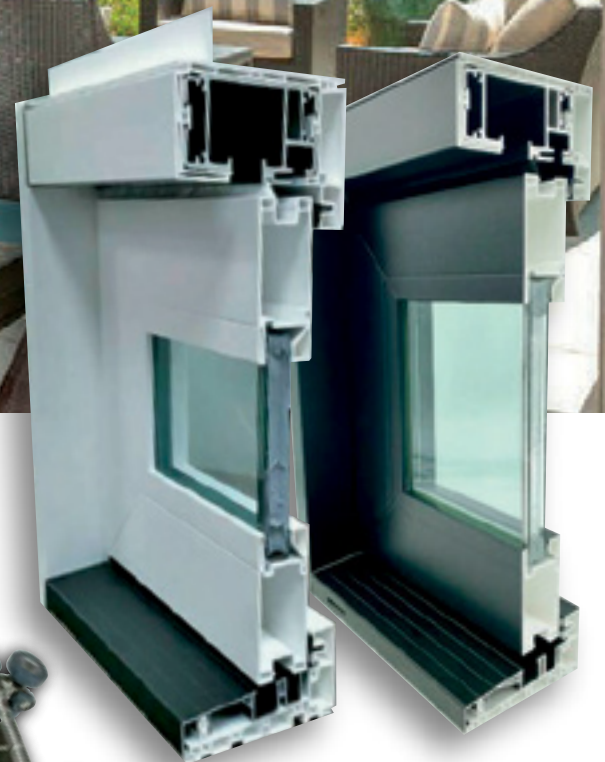
### ▣ Optional

- Black Interior and Exterior Specialty Laminate

Featuring **WINSHIELD**

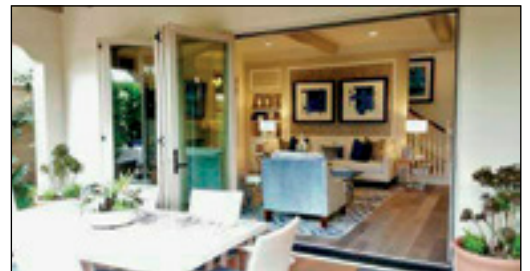


Sentry™ Multi-point lock



Centor®Architectural E3 Hardware

# 3750 Folding Door System



## Features and Benefits

- Vinyl Frame with aluminum reinforcement.
- Foam backed seal on main frame.
- Contemporary style vinyl sash with internal aluminum reinforcement.
- Welded sash corners.
- Dual interlocking weather seal on sash for superior air and thermal performance.
- Centor Architecture™ E3 hardware system.
- Stainless multipoint locking hardware.

### ■ Sizes

- New construction / replacement.
- Custom applications.

### ■ Glass Options

- Cardinal™ LoE 366® dual glazed tempered glass.
- Warm-edge spacer system.
- Clear, obscure, and custom glass is available.

### ■ Grid Options

- SDL (Simulated Divided Lite).
- GBG (Grids Between Glass).

### ■ Hardware Options

- Hardware colors; white, black powder coat, and brushed chrome.

### ■ Extruded Vinyl Colors



### ■ Optional Exterior Stocked Colors



### ■ Optional

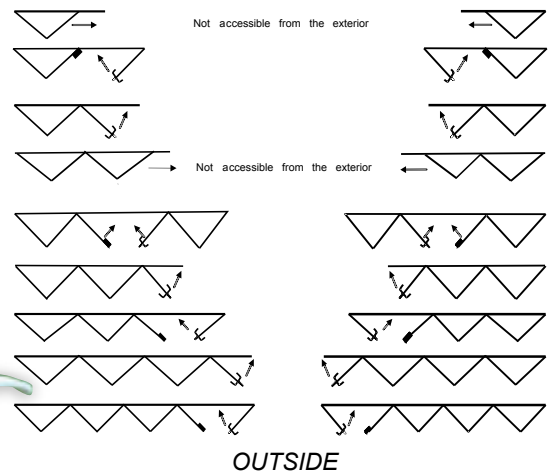
- Black Interior and Exterior Specialty Laminate

Featuring **WINSHIELD**



**Sentry™** Multi-point lock

Example of folding door configuration



# Keyed Access Panel



## **Introducing keyed access on even panel configurations**

**Simple ease of use function allowing keyed access on even panel configurations  
Practical design, bringing the outdoors in with more options for more opening sizes  
Contact your WinDor representative for more information**





# Exterior Access Configurations and Colors

2.0.2 Outswing  
Exterior

4.4.0 Outswing  
Exterior

4.2.2 Outswing  
Exterior

6.6.0 Outswing  
Exterior

6.4.2 Outswing  
Exterior

8.8.0 Outswing  
Exterior

8.6.2 Outswing  
Exterior

4.4.0 Outswing  
Exterior

2.0.2 Outswing  
Exterior

4.0.4 Outswing  
Exterior

6.0.6 Outswing  
Exterior

6.2.4 Outswing  
Exterior

8.0.8 Outswing  
Exterior

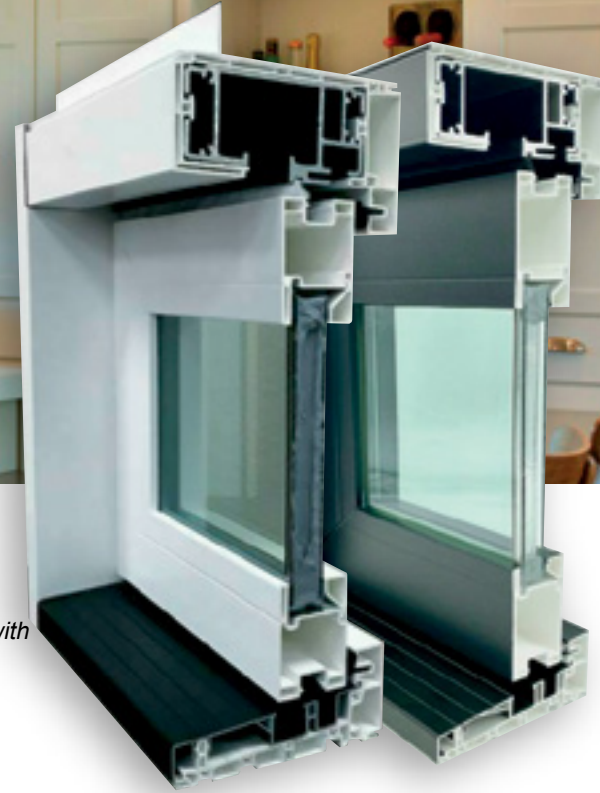
8.8.0 Outswing  
Exterior

8.4.4 Outswing  
Exterior

Four photographs of door handles and locksets are shown below the diagrams, arranged in two pairs. The first pair shows a light beige/taupe handle and lockset. The second pair shows a black handle and lockset. Each handle is shown in its closed position, and the lockset is shown below it.



# 2750 and 3750 Folding Window System



## Features and Benefits

- Vinyl frame with aluminum.
- Foam backed seal on main frame.
- Contemporary style vinyl sash.
- Welded sash corners.
- Dual interlocking weather seal on sash for superior air and thermal performance.
- Centor™ E3 hardware system in stainless and black powder coat finish.
- Stainless multipoint locking hardware Internal multipoint shoot bolt system.

### ■ Glass Options

- Cardinal™ 366® LoE dual glaze with warm edge spacer system.
- Clear, obscure, and custom glass is available.

### ■ Hardware

- Hardware colors; white, black powder coat, and brushed chrome.

### ■ Grids

- SDL (Simulated Divided Lite).
- GBG (Grids Between Glass).

### ■ Sizes

- New construction / replacement custom applications.

### ■ Extruded Vinyl Colors

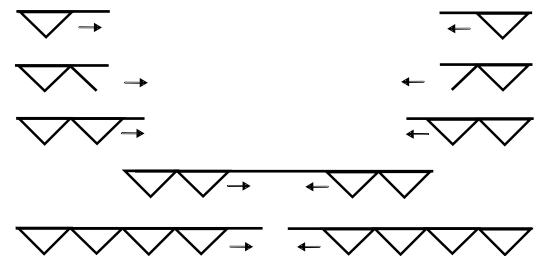


### ■ Optional Exterior Stocked Colors



### ■ Optional

- 3750 Black Interior and Exterior Specialty Laminate Featuring **WINSHIELD**



Drawings show out-swing operation



*Allow yourself to bring the outdoors in or the indoors out.  
For new construction, replacement, and new add-on.*



WinDor is a proud member of the following



The National  
Fenestration  
Rating  
Council



American  
Architectural  
Manufacturer  
Association

[www.windorsystems.com](http://www.windorsystems.com)

20201309

